

***Breastfeeding Support
in
Lewis & Clark County***



- Family Obstetrics at St. Peter's Hospital 444-2208
- Faylene Nelson, FNC, IBCLC International Board Certified Lactation Consultant 443-0939, cell 431-5809
- WIC (Women's, Infant's and Children's) Nutrition Program 457-8912
- LaLeche League breastfeeding peer counselors
Jaime Terry 443-2069
Jane Bucks 443-3310

***Breastfeeding Support
in
Lewis & Clark County***



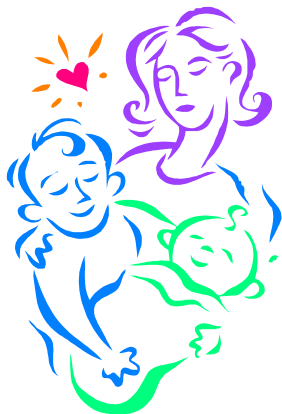
- Family Obstetrics at St. Peter's Hospital 444-2208
- Faylene Nelson, FNC, IBCLC International Board Certified Lactation Consultant 443-0939, cell 431-5809
- WIC (Women's, Infant's and Children's) Nutrition Program 457-8912
- LaLeche League breastfeeding peer counselors
Jaime Terry 443-2069
Jane Bucks 443-3310

***Breastfeeding Support
in
Lewis & Clark County***

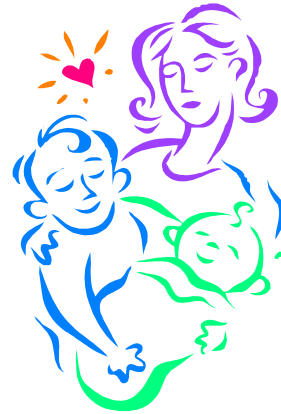


- Family Obstetrics at St. Peter's Hospital 444-2208
- Faylene Nelson, FNC, IBCLC International Board Certified Lactation Consultant 443-0939, cell 431-5809
- WIC (Women's, Infant's and Children's) Nutrition Program 457-8912
- LaLeche League breastfeeding peer counselors
Jaime Terry 443-2069
Jane Bucks 443-3310

This has been provided by the Helena Area Breastfeeding Coalition Group.



This has been provided by the Helena Area Breastfeeding Coalition Group.



This has been provided by the Helena Area Breastfeeding Coalition Group.

